





Evil_boo's guide to removing body parts.

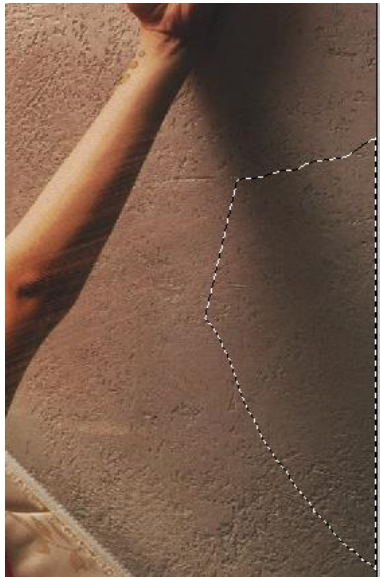
Let's have some fun disconnecting some body parts from our robot friends! Here's how!

Tool's you'll be needing:


1. Clone Stamp: 
2. Patch Tool: 

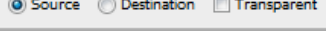
The Manip:

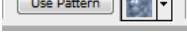
1. Download these images:
 - a. <http://imgur.com/3LCD8K5>
 - b. http://fembotwiki.com/index.php?title=File:Connection_Port.psd
2. Open Photoshop, then open the first link.
3. Create a working layer for this.
 - a. Press Ctrl+J or Drag the "background" layer down to the copy layer button  in the Layer manager on the right hand side.
 - b. Click on the visibility icon next to the background layer to make it invisible. 
 - c. Double click the name of the new layer (currently called "layer 1" and rename it to "model"
4. Select the Patch Tool from the tool box on the left.
 - a. The Patch tool is great for covering up sections of an image with other similar parts of an image.
 - b. Select a small portion of the shadow cast by the girls arm on the top right hand corner of the image.



c. On the ribbon make sure that you have the following settings.

i. New Selection: 

ii. Source: 

iii. Use Pattern: 

- d. Click inside the selection and then drag that selection down just a little, enough to get some of the floor texture. You will need to repeat this process until you have removed most of the shadow. Don't worry too much about getting it right up to the edge of the girls arm, because that's the next thing we're removing!
- e. Draw a selection around the girls arm, stopping just above the mattress below her. Once selected, move the selection over a portion of the floor texture. You may have to repeat this a few times to get it to look correct.

5. You may notice in the top corner, there are some strange looking "flair" like anomalies.




These happen when photoshop patches something right on the edge of another element. It is attempting to grab texture from around your image. Since this is the corner of the image, it doesn't have much to grab.

6. Select the "Clone Stamp" tool from the toolbox on the left.
- Hold Alt on your keyboard and click on a section of the floor, just below these little flairs. Notice that the cursor changes to a crosshair, this will select the section of the image to clone.
 - Let go of Alt and move the circle cursor over the flairs
 - Simply click and drag across them, and the clone stamp picks up where you put the cross hairs and clones it onto the other part of the image.

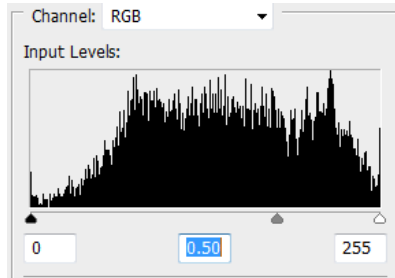


d. Better, but we can do more.

7. Select the "patch tool" from the toolbox on the left.
- Select the hard line, then patch it with some nearby texture.
8. Open the connection port.psd file that was downloaded earlier.
- Hold down Ctrl on your keyboard and click on the layer in the layer manger. This will select the contents of the layer.
 - Press Ctrl+C or go to the Edit menu and select "copy"
 - Switch over to the model, and press Ctrl+V or go to the edit menu and select "Paste"
9. Double click the new layer that is created when pasted and rename it to "connection"
10. Press Ctrl+T or go to the Edit menu and choose "Free Transform"
- Using the cursor or the arrow keys, move the port to the girls arm.
 - Move your cursor to the corner of the connection port, move it just outside the handles there until your cursor turns into a bent arrow. 
 - Rotate the port until it lines up with the girls arm.



- d. Press Ctrl+L or go to the Image menu->adjustments->Levels
- e. On the top section of the window, move the grey slider in the middle to the right to darken the connection port as it was too bright to match with the lighting in the photo. You may also manually enter a number in the middle field below the slider. I chose 0.50



- f. Click "ok" to confirm your changes.
 - g. Finally, click on the filter menu->blur->blur
11. This girl also has a tattoo on her right arm, lets remove that.
 - a. Click on the "Model" layer
 - b. Select the "Patch Tool" again
 - c. Draw a tight selection around the tattoo
 - d. Drag the selection just to the right of her tattoo
 - e. Repeat this process for the tattoo on her wrist.
 12. Save your work.
 - a. Click on the file menu and choose save as, then save the file as a PSD file
 - b. Click on the file menu and choose save as, then save the file as a JPEG file
 13. Finally, upload your work to the wiki for the rest of us to enjoy!